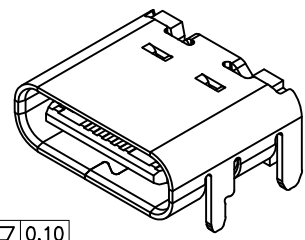
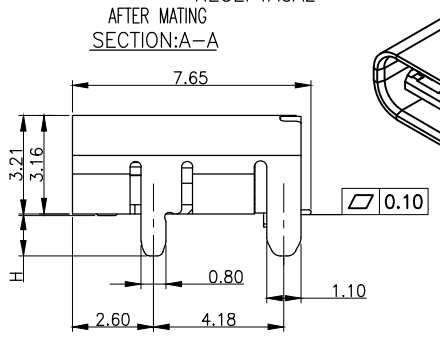
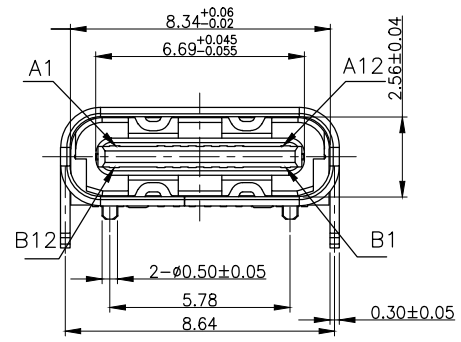
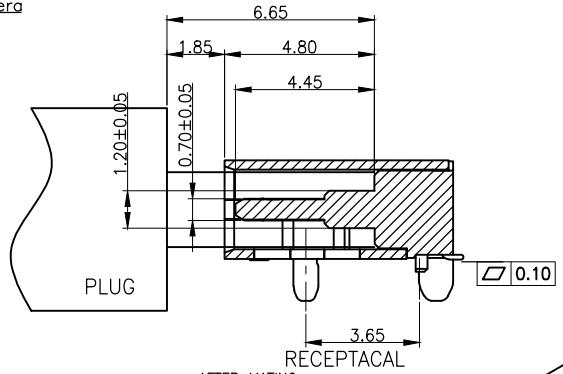
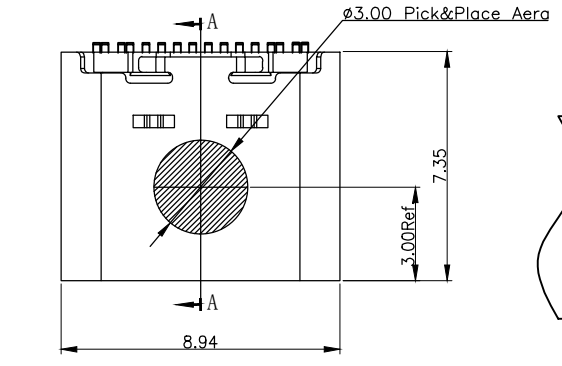
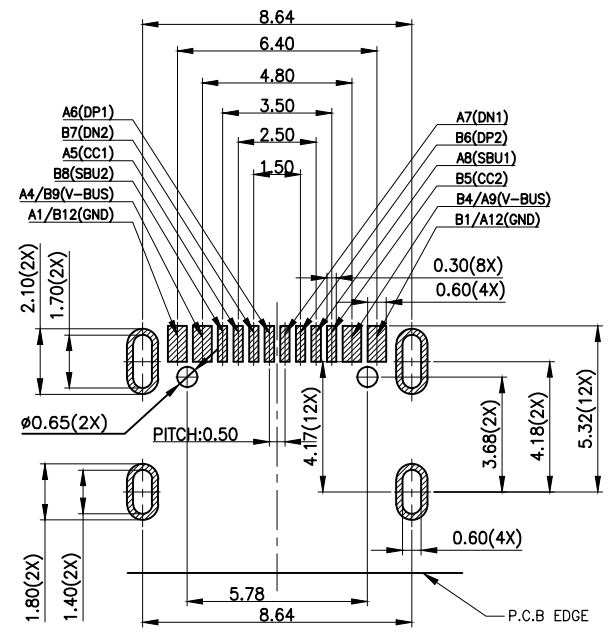
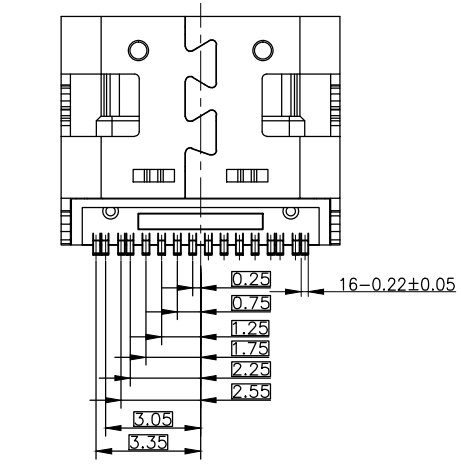


REV.	ECN.NO.	MODIFY.CONTENT	DATE
A		NEW	2019/06/17



- MATERIAL SPECIFICATION:
 - HOUSING:HIGH TEMPERATURE RESISTANT PLASTIC,UL94 V-0.
 - CONTACTS:COPPER ALLOY
 - MID PLATE: STAINLESS STEEL
 - FRONT SHELL: STAINLESS STEEL
- PLATING SPECIFICATION:
 - Ni 50u" MIN. UNDER PLATED OVER ALL.
 - Au PLATED ON THE FUNCTIONAL AREA OF CONTACT.
- CONTACTS:
 - (GOLD PLATING THICKNESS FOLLOW THE P/N)
 - PLATING SPECIFICATIONS OF THE SOLDER AREA FOLLOW THE P/N
- FRONT SHELL:
 - Ni 30u" MIN. UNDER PLATED OVER ALL.
- SHIELD PLATE&EMI PLATE:
 -
- MECHANICAL PERFORMANCE,
 - INSERTION FORCE: 0.5~2.0kgf.CLEAR ONLY
 - REMOVAL FORCE: 0.8kgf~2.0kgf.
 - DURABILITY: 10000 CYCLES.
- ELECTRICAL PERFORMANCE,
 - CURRENT RATING:5.0A
VOLTAGE RATING:5.0V
 - LLCR:
 - VBUS & GND PINS AND OTHER PINS: 40mΩ/PIN MAX.
 - SHIELD: 50mΩ/MAX.
 - LLCR MAX. CHANGE OF ALL PINS: 10mΩ.
 - INSULATION RESISTANCE: 100MΩ MIN
 - DIELECTRIC WITHSTAND VOLTAGE,AC 100V FOR 1 MINUTE.
- ENVIRONMENTAL PERFORMANCE:
 - OPERATING TEMPERATURE: -25°C~+85°C.
- IR REFLOW:
 - THE PEAK TEMPERATURE ON THE BOARD SHALL BE MAINTAINED FOR 10 SECONDS AT 260°C.



RECOMMENDED PCB LAYOUT(THICKNESS:0.80MM)
PWB TOLERANCE: ±0.05

TABLE A

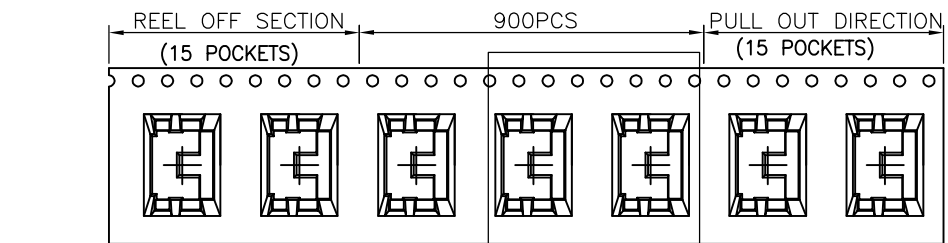
Description		Part NO.
H	1.00	JYS-USB730-005
H	1.35	JYS-USB730-005-1
H	1.80	JYS-USB730-005-2

GENERAL TOLERANCE		DWG NO.	JYSA20190617	APPD:	WIND	Scale	1:1
X.±0.45	x.±5°	Title	USB TYPE C 16PIN 4DIP TYPE CONN. L=7.35mm	CHKD:		UNIT	mm
.X±0.35	.x'±2°			DR:			
.XX±0.25	.xx'±1°	Part NO.	SEE TABLE A	Date	2019/06/17		
.XXX±0.15	.xxx'±0.5°			JYSCONN Electronics Co., LTD.			
SHEET	1/2						

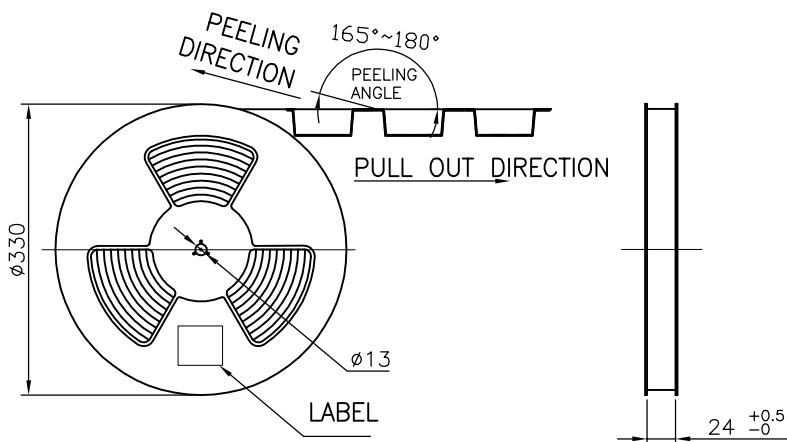
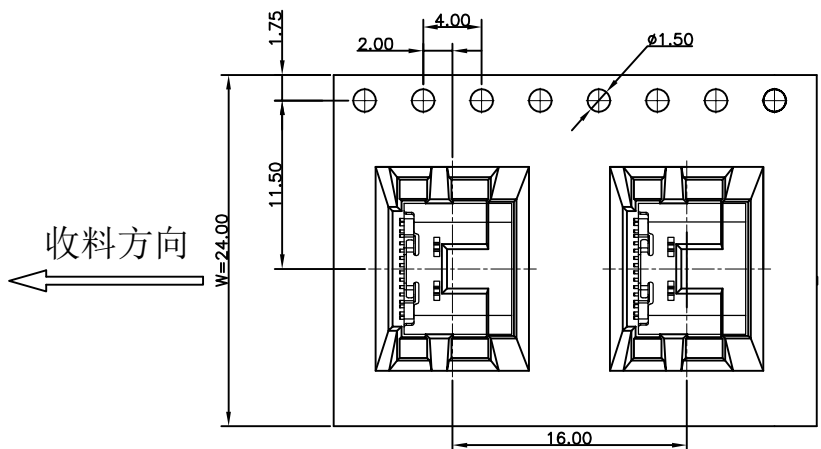
REV.	ECN.NO.	MODIFY.CONTENT	DATE
A0		NEW	2019/06/17

<TABLE 1> PACKAGING QUANTITY

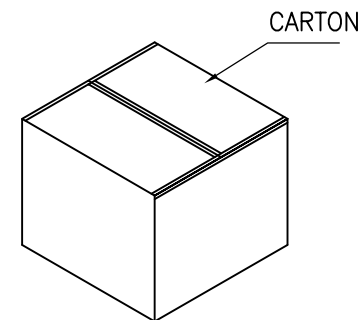
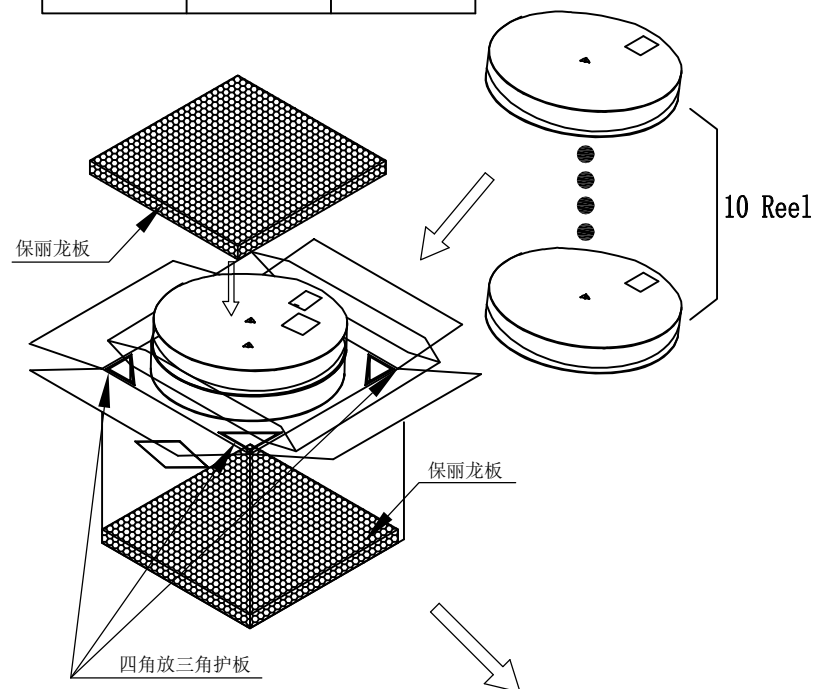
QTY/REEL	REEL/CARTON	QTY/CARTON
900	10	9000



SEE DETAIL X



<图三>



备注:

- 依<图一>示放置产品于Carrier tape中,每穴放置1PCS产品,Carrier tape卷绕时,前端和尾端各需预留15PCS空格。
- Cover tape覆盖Carrier tape前端需超出240mmMIN,后端需留出240mmMIN,两端都以美文胶贴固。
- 包装机包好后,在Reel的个等分点上贴胶布,以防止REEL张开,每REEL贴1PCS标签,如<图二>示
- 包装数量见如<TABLE 1>示
- 包装成箱见如<图三>示
箱底放保丽龙板,10个 REEL盘,放入箱内,四角各放一个三角护板,最上层再放上保丽龙板。
- 封箱,在封好的纸箱侧面中间位置贴上出货标签。

GENERAL TOLERANCE		DWG NO.	APPD:	WIND	Scale	1:1
X.±0.30	x.'±5'	Title	CHKD:	DR:	UNIT	mm
.X±0.15	.x'±2'					
.XX±0.05	.xx'±1'	Part NO.	Date	2019/06/17		
.XXX±0.02	.xxx'±0.5'					
SHEET	2/2		Shenzhen JYSCONN Electronics Co., LTD.			